

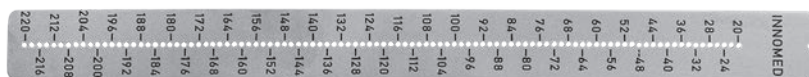
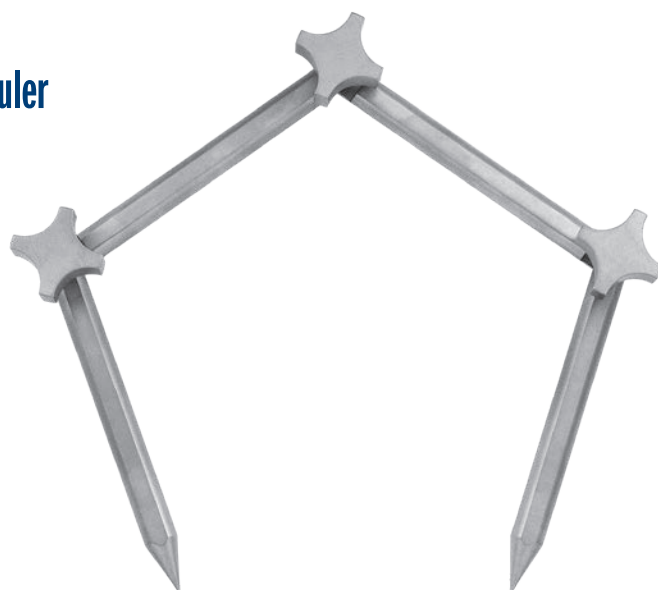
Articulated Caliper Device with Ruler

Designed by Vincent Y. Ng, MD

A highly precise (within 1 mm) device designed for measuring distances between two points – can be used even if there are intervening structures like soft tissue or bone, and in situations where a straight ruler will not work

Example of use include measuring limb length in total hip arthroplasty, confirming length in megaprosthesis knee replacements, and assessing dimensions of allografts.

PRODUCT NO'S:	
2026-00	[Articulated Caliper with Ruler]
Set Includes/ Available Separately:	
2026-01	[Articulated Caliper Only] Overall Length (unfolded): 15.25" (38,8 cm) Dimensions Triangle Folded: 4" x 4.25" (10,2 x 10,8 cm)
2026-02	[Ruler Only] Overall Length: 9" (22,9 cm) Width: .79" (2 cm)



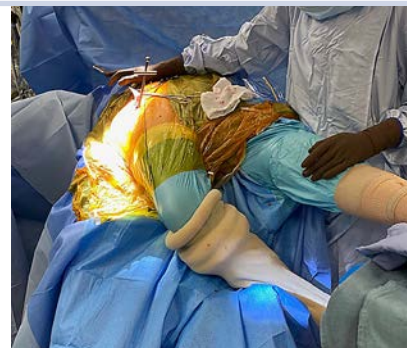
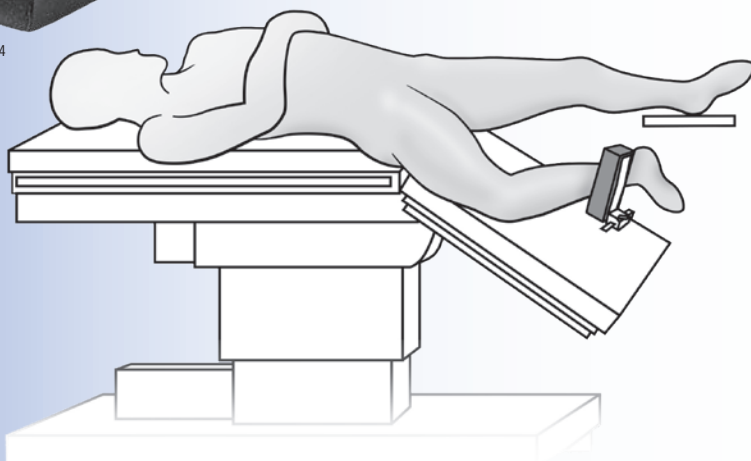
Direct Anterior Total Hip Arthroplasty Leg Positoner Assembly

Designed by Benjamin M. Frye, MD

Designed to help position the operative leg for femoral preparation in direct anterior approach total hip arthroplasty using a standard operating table

- ▶ Allows one assistant to secure the leg for femoral preparation
- ▶ Attaches directly to a standard operating table
- ▶ Allows easy assessment of hip stability and leg length discrepancy

US Patent No. 16/523,304



PRODUCT NO'S:	
4165-00	[Assembly]
Individual/Replacement Parts:	
4165-01	[Leg Support] Overall Length: 8.75" (22,2 cm) Width: 2.5" (6,4 cm)
4165-02	[Calibrated Rod] Dimensions: 9.625" x 7.125" x 1" (24,5 x 18,1 x 2,5 cm)
4165-P	[Leg Support Pad] Dimensions: 8.5" x 3" x 1.75" (21,6 x 7,6 x 4,4 cm)
4150-PS	[Support Screw] T-Handle Width: 1.875" (4,7 cm) T-Handle Depth: 1.5" (3,8 cm)
9120	[Table Clamp] Dimensions: 1.7" x 1.7" x 1.4" (4,3 x 4,3 x 3,6 cm)



Medial Acetabular Retractors

Designed for acetabular exposure during total hip surgery



PRODUCT NO'S:

C1001 [Left]

Overall Length: 15" (38,1 cm)
Handle Length: 6" (15,2 cm)
Blade Width: 18 mm

C1002 [Right]

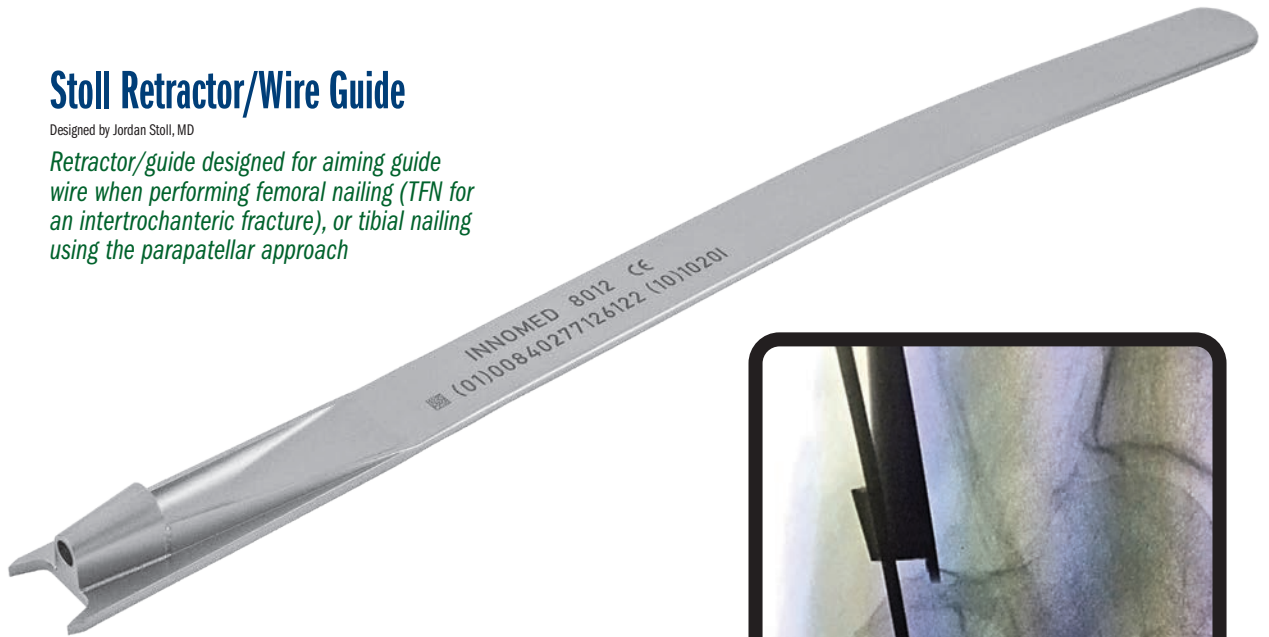
Overall Length: 15" (38,1 cm)
Handle Length: 6" (15,2 cm)
Blade Width: 18 mm



Stoll Retractor/Wire Guide

Designed by Jordan Stoll, MD

Retractor/guide designed for aiming guide wire when performing femoral nailing (TFN for an intertrochanteric fracture), or tibial nailing using the parapatellar approach



PRODUCT NO:

8012

Overall Length: 12" 30,5 cm
Blade Width: .71" (1,8 cm)
Prong Length: 6 mm
Guide Hole Diameter: 4,5 mm



INNOMEDI

© 2020 Innomed, Inc.

Innomed, Inc
103 Estus Drive
Savannah, GA 31404
USA

Tel 912.236.0000
Fax 912.236.7766

www.innomed.net
info@innomed.net

Innomed-Europe LLC
Alte Steinhauserstrasse 19
CH-6330 Cham, Switzerland
Tel 0041 (0) 41 740 67 74
Fax 0041 (0) 41 740 67 71

www.innomed-europe.com
info@innomed-europe.com

contact.france@
innomed-europe.com

Innomed-Europe GmbH
c/o Emons Logistik GmbH
In Rammelswiesen 9 D-78056
Villingen-Schwenningen
Deutschland

Tel 0049 (0) 7720 46110 60
Fax 0049 (0) 7720 46110 61

www.innomed-europe.com
info@innomed-europe.com